

» Labelling with the **direct** advantage

From the creators of the very first **Windows®** label design software comes **LabelDirect** - a PC labelling program written for specific printer ranges which offers unrivalled performance and control of your printers' features.

By driving your printer in its native command language, LabelDirect avoids the complexities of printer drivers whilst offering full control of your printer's features and distinct performance advantages over other labelling programs. What's more, the program also includes accurate screen representations of each printer's fonts making LabelDirect completely and uniquely WYSIWYG.

LabelDirect offers all the features you would expect from a professional labelling package including database integration, copy fitting, variable graphics, serial numbers and industry standard linear and 2D barcode symbologies; plus many other unique features developed in response to Image's 25 years of experience in the labelling industry.

- Fastest possible print speed
- 100% WYSIWYG design including accurate font representation
- Full software control of printer features and settings
- Comprehensive range of variable data types
- Intuitive design tools - design labels in minutes
- Support for all major thermal printer ranges
- Use on any port or across a network

» What you see is what you get

Fastest possible* Printing

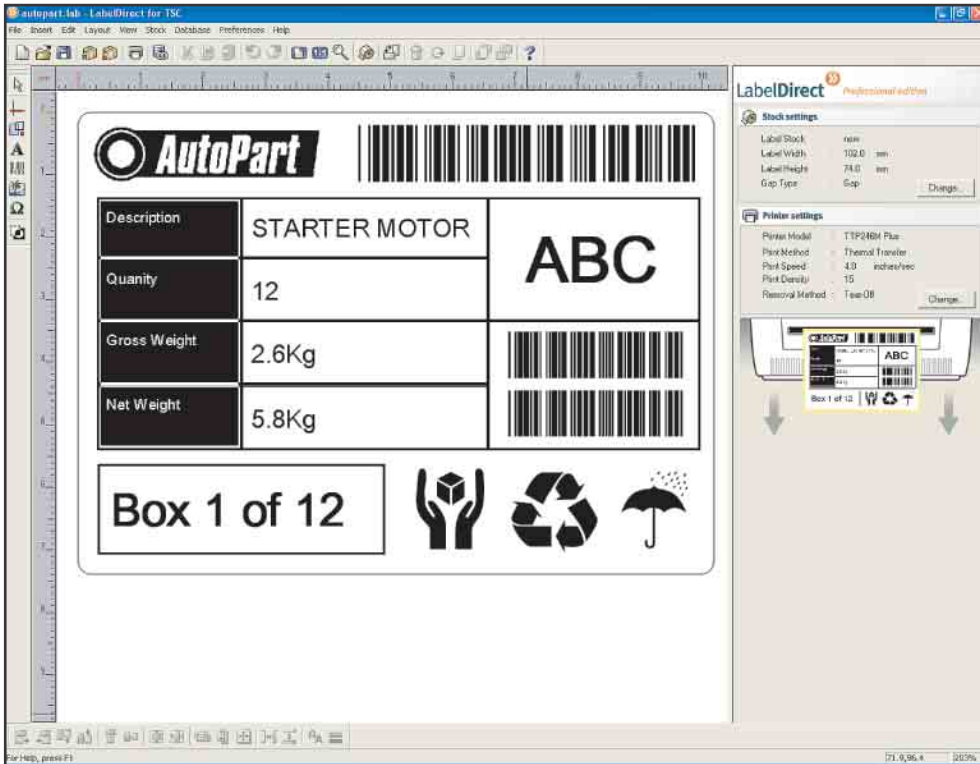
LabelDirect Professional edition	Competitor software

Screen representation using printer fonts

Printed label



» Labelling in less clicks of the mouse



Printer and stock settings displayed on the right hand side of the screen for easy editing. There is no need to go to the printer driver. All settings are made here and are saved with the label template.

On screen print preview of label appearance and rotation on screen



Element properties displayed with one click

Comprehensive range of variable data sources.

Formatting Tab for more advanced features

Printer fonts for speedier printing and truetype fonts available from the drop down menus

Preprinted stationery background can be displayed to allow accurate layout

EnLabel Foods

KEEP REFRIGERATED EAT ON DAY OF PURCHASE

BACON LETTUCE AND TOMATO SANDWICH

Bread (49%): (Wheat Flour, Water, Yeast, Soya Flour, Emulsifier (E472e), Flour Treatment Agent: Absorbic Acid (Vitamin C)), Bacon (22.2%): (Soya, Starch, Salt, Vegetable Protein) Min 75% Meat, Tomato (14.8%), Iceberg Lettuce (9%)

Nutritional Information		
Typical Values	Per 100g	Per Pack
Energy (Kj)	234	456
Energy (Cal)	765	456
Protein (g)	666	822
Carbohydrate (g)	564	456
Fat (g)	321	822

UK AG077 EEC

£1.39

Use By End Of **01.10.08**

Barcode: 651234567890

EnLabel Foods, UB2 5DP Tel: 0202 911 919

Print only version for use where design is only authorised by certain personnel

Connection to database or Data store

Data Store facility available to create a database directly from the label data

EnLabel Foods

KEEP REFRIGERATED EAT ON DAY OF PURCHASE

BACON LETTUCE AND TOMATO SANDWICH

Bread (49%): (Wheat Flour, Water, Yeast, Soya Flour, Emulsifier (E472e), Flour Treatment Agent: Absorbic Acid (Vitamin C)), Bacon (22.2%): (Soya, Starch, Salt, Vegetable Protein) Min 75% Meat, Tomato (14.8%), Iceberg Lettuce (9%)

Nutritional Information		
Typical Values	Per 100g	Per Pack
Energy (Kj)	234	456
Energy (Cal)	765	456
Protein (g)	666	822
Carbohydrate (g)	564	456
Fat (g)	321	822

UK AG077 EEC

£1.39

Use By End Of **01.10.08**

Barcode: 651234567890

EnLabel Foods, UB2 5DP Tel: 0202 911 919

Print List feature available which allows creation of print jobs where a record can be chosen and given individual copy quantities and jobs can be saved for future use. Any number of print lists can be created

